

ICM(I)-18"

ICM(I)-18" - 8, 12, 16, 20, and 24 GAME DISPENSER INSTALLATION.
For "Drop-In models see note at the bottom of instructions:

NOTE: THE CUTOUT FROM CUSTOMER TO CLERK IS 16-3/4"

CHOSE TO DO IT YOURSELF.

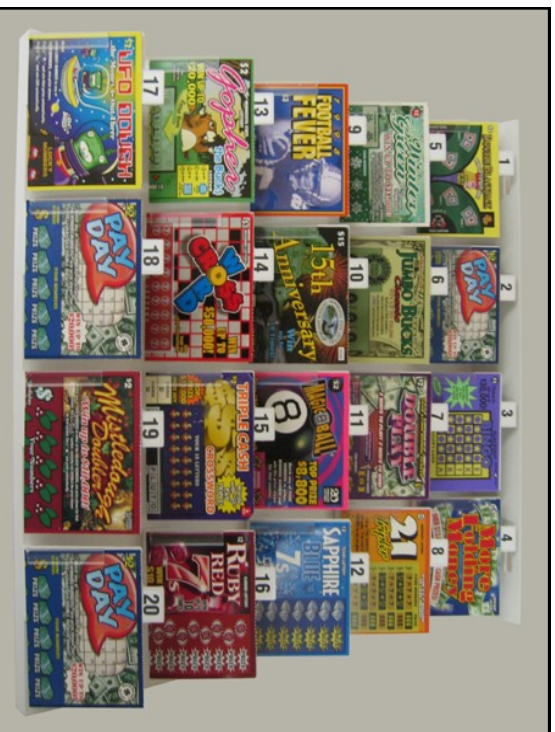
you start or leave it taped in and work carefully.

#4 STEPS FOR INSTALLATION:

- 1. Before you cut a hole make sure you have clearance under the counter!
- The hole is at least 16-3/4" x 18-3/4" and the depth of the unit below the counter top is about 8 game = 10", 12 game = 12", 16 game = 14", 20 game = 17", and 24 game = 20"
- The hole should be set in at least 3" from the clerk's side of the counter so the clerks won't bump into anything extending from under the counter.
- **MAKE SURE YOU HAVE CLEARANCE!!!**
- Once you are sure of clearance and the hole's location check it again!

2. Separate the upper and lower portions of the dispenser. Do not lose the carriage bolts, washers and wing nuts. Remove the trays from the unit and set aside

3. Cut the hole. **Wait! Are you sure about the location?**
 - Hole size is **16-3/4 x 18-3/4"** - short distance is customer to clerk!!!
 - Apply a bead of caulking around the hole on the counter surface



4. Reattach the base of the dispenser to the upper part using bolts, washers, and nuts. There is adjustment possible up and down for the lower unit
 - Load the display tray and place it up under the glass. See loading instructions at right. Use the numbered clips provided on displayed tickets to make it easy for the customer to tell which ticket they want to buy
 - Load the trays with the ticket packs. Place tickets under the plastic rods
- Do not run the tickets over the rods.** Replace trays and lock.

NOTE:

1. The bottom glass is sealed in place to prevent leaks under the counter.
2. "DROP-IN" models do not have a top and bottom to separate

QUESTIONS? Call us at (800) 253-4295 or email: info@tatinc.com